



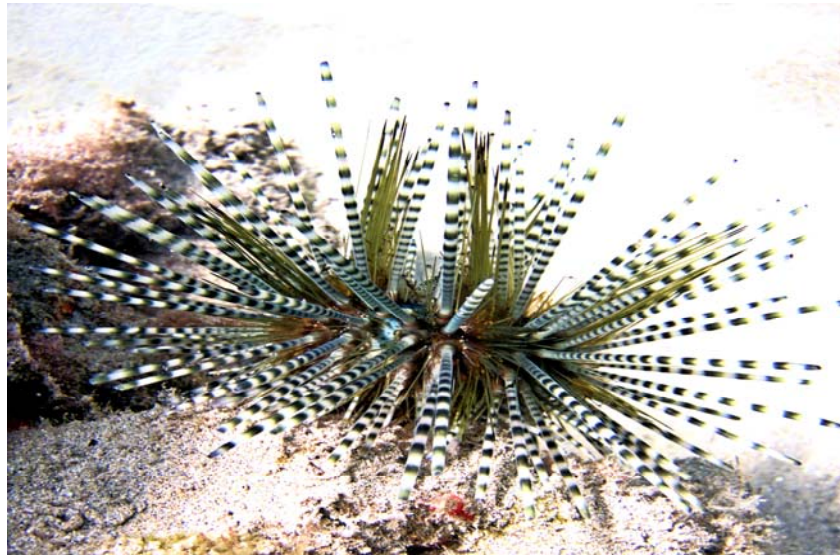
SCUBA LUV MAUI DIVE REPORT

KEAWAKAPU, MAUI

“CRITTER OF THE WEEK”

(808) 870-2738

MAY IS “ URCHIN MONTH” !!!



BANDED URCHIN “wana” - The most common long-spined urchin in Hawaii, black and grey banded stripes grows to about 8”; usually inhabited by a small parasitic crab. All urchins have tube feet tipped with suckers that help cling, move about and remove unwanted debris. About 900 species exist worldwide, 75 known to be in Hawaii. Some ancient Hawaiians referred to “wana’ as “aumakua” (the embodiment of ancestors) and an urchin appearing in their dreams held special meaning....

DATE OF REPORT: MAY 12, 2012
AIR TEMPERATURE: 84 degrees
WATER TEMPERATURE: 75 degrees
VIZIBILITY: 60' +

PHOTO BY: STEVE MADARAS

